



Chulmleigh College

RECEPTION: 01769 580215

PUPIL ABSENCE LINE: 01769 582120

EMAIL: [admin@chulmleigh.devon.sch.uk](mailto:admin@chulmleigh.devon.sch.uk)



# OPTIME

[marketing@chulmleigh.devon.sch.uk](mailto:marketing@chulmleigh.devon.sch.uk)

12 September 2025



## Dear Parents and Carers

As we come to the end of our first full week of 2025/26, I am pleased to reflect on an overwhelmingly positive, calm and productive week in school.

Certainly, there is a significant change in pace for families in returning to school after the summer holiday. A mark of our school ethos is the dedication to academic study and hard work – it has been very satisfying to see classrooms silently working this week, eyes on the teaching staff working from the front and the Teaching Assistants working alongside pupils. There has been an air of calm throughout the College all week, which reminds us how privileged we all are to work in a school with the strengths of Chulmleigh College. I also recognise the hard work that happens at home in making sure pupils are ready for school.

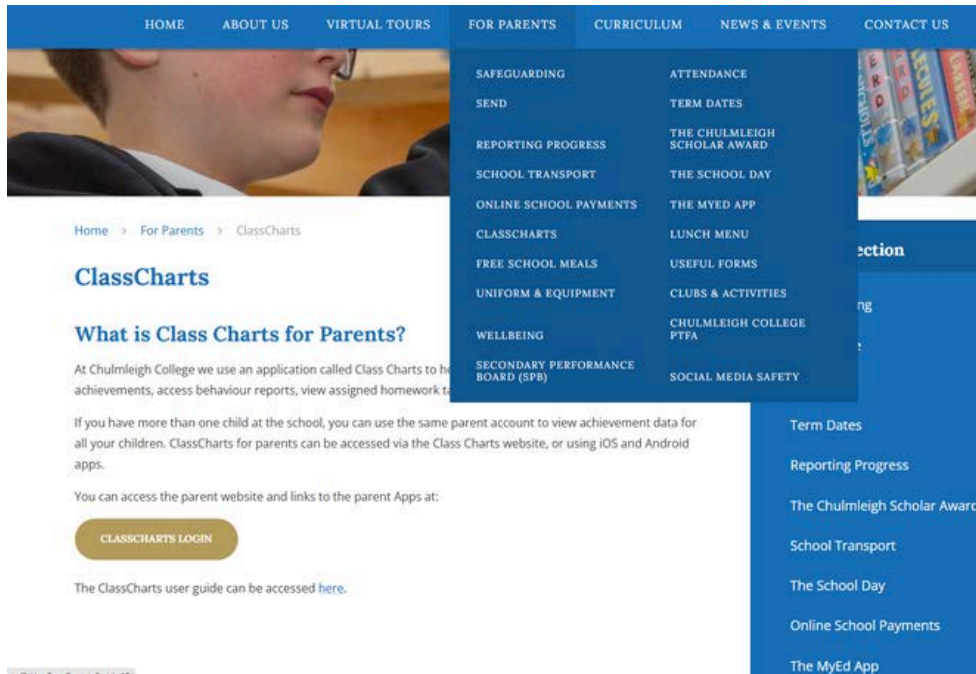
I have enjoyed the Scholar Assemblies this week particularly and have been hugely impressed with the way our pupils engage and listen in each assembly. Our assembly focus has been on the importance of hard work and I have been speaking about the life of former Foreign Secretary and resident of Copplestone, Ernest Bevin. The story of Bevin is one of success through selflessness, hard work and service from the most humble of beginnings. Pupils have been interested to know that he once walked along the same roads and lanes they do today. I think we can all reflect on Bevin's example of service and endeavour on our own journey through life. I also think Bevin would wholly approve of the way we do things here at Chulmleigh.

In closing, I would like to particularly recognise our new Year 7 pupils as they continue to settle so well into secondary education. All staff have been impressed with the positivity and attitude of our newest and youngest pupils and we are full of optimism for what they will achieve in the future.

Mr Payne, Headteacher

We would like to remind parents that our College website is a great resource for all aspects of College life. The 'For Parents' tab provides a wealth of information and is well worth familiarising yourselves with the information that is available here:

<https://www.chulmleigh.devon.sch.uk>



Home > For Parents > ClassCharts

## ClassCharts

### What is Class Charts for Parents?

At Chulmleigh College we use an application called Class Charts to track student achievements, access behaviour reports, view assigned homework tasks and more.

If you have more than one child at the school, you can use the same parent account to view achievement data for all your children. ClassCharts for parents can be accessed via the Class Charts website, or using iOS and Android apps.

You can access the parent website and links to the parent Apps at:

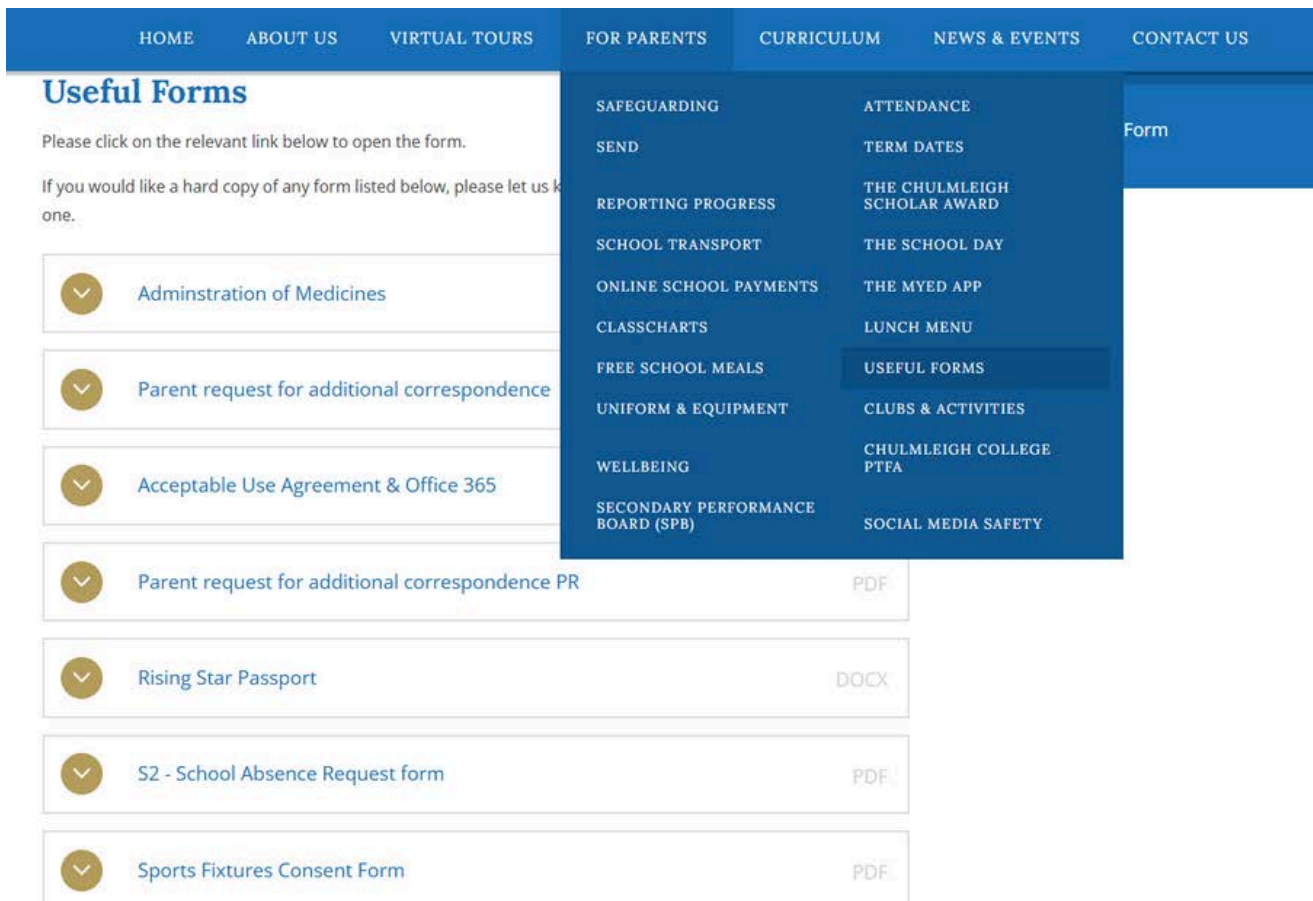
[CLASSCHARTS LOGIN](#)

The ClassCharts user guide can be accessed [here](#).

- SAFEGUARDING
- SEND
- REPORTING PROGRESS
- SCHOOL TRANSPORT
- ONLINE SCHOOL PAYMENTS
- CLASSCHARTS
- FREE SCHOOL MEALS
- UNIFORM & EQUIPMENT
- WELLBEING
- SECONDARY PERFORMANCE BOARD (SPB)
- ATTENDANCE
- TERM DATES
- THE CHULMLEIGH SCHOLAR AWARD
- THE SCHOOL DAY
- THE MYED APP
- LUNCH MENU
- USEFUL FORMS
- CLUBS & ACTIVITIES
- CHULMLEIGH COLLEGE PTFA
- SOCIAL MEDIA SAFETY

We would particularly like to direct parents to our useful forms page on our website:

<https://www.chulmleigh.devon.sch.uk/forms>



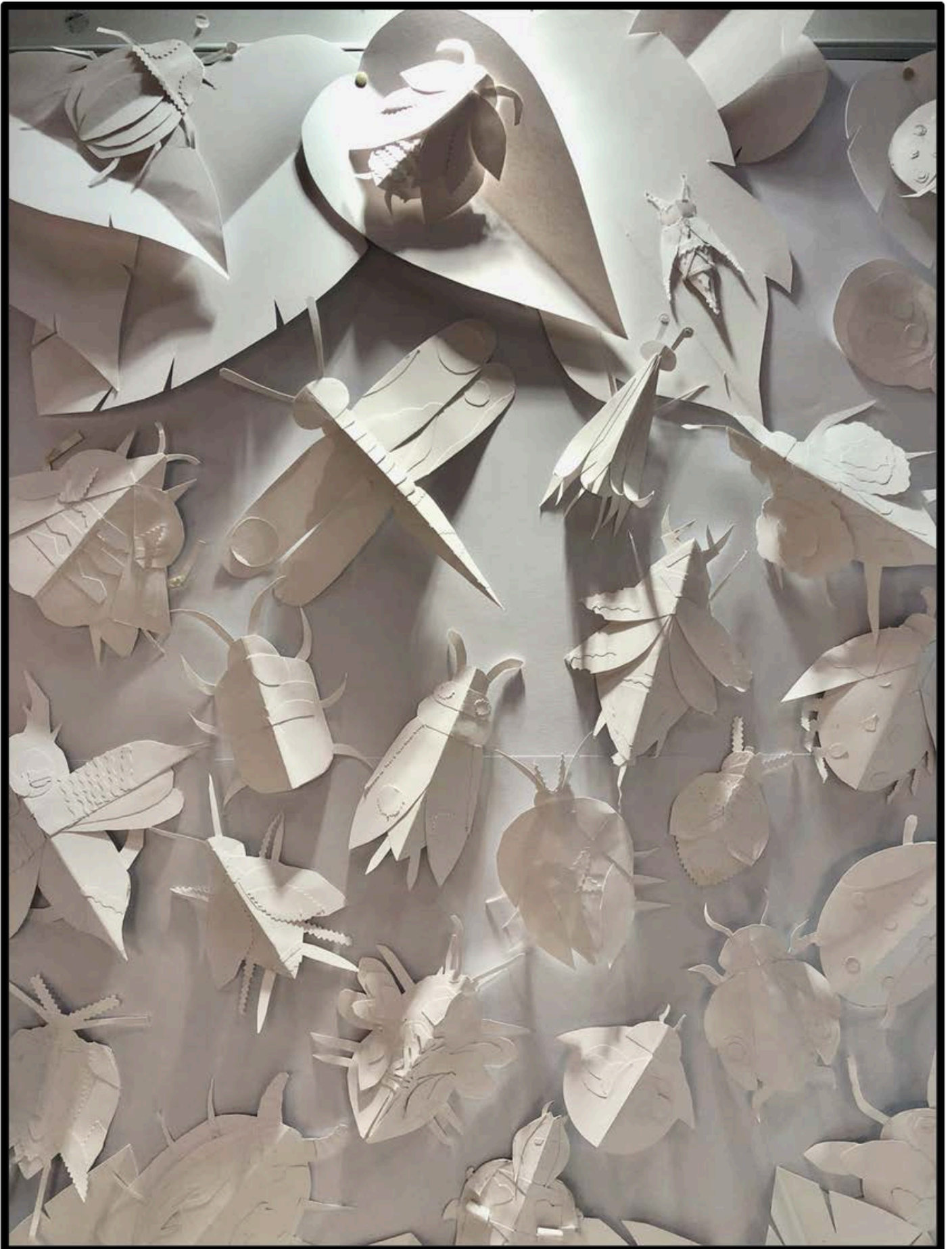
## Useful Forms

Please click on the relevant link below to open the form.

If you would like a hard copy of any form listed below, please let us know.

- Administration of Medicines
- Parent request for additional correspondence
- Acceptable Use Agreement & Office 365
- Parent request for additional correspondence PR [PDF](#)
- Rising Star Passport [DOCX](#)
- S2 - School Absence Request form [PDF](#)
- Sports Fixtures Consent Form [PDF](#)

- SAFEGUARDING
- SEND
- REPORTING PROGRESS
- SCHOOL TRANSPORT
- ONLINE SCHOOL PAYMENTS
- CLASSCHARTS
- FREE SCHOOL MEALS
- UNIFORM & EQUIPMENT
- WELLBEING
- SECONDARY PERFORMANCE BOARD (SPB)
- ATTENDANCE
- TERM DATES
- THE CHULMLEIGH SCHOLAR AWARD
- THE SCHOOL DAY
- THE MYED APP
- LUNCH MENU
- USEFUL FORMS
- CLUBS & ACTIVITIES
- CHULMLEIGH COLLEGE PTFA
- SOCIAL MEDIA SAFETY



During the summer term Year 8 pupils created these fantastic artworks as a part of their Insects and Ecology project.

These delicate paper sculptures show the form and structure of these amazing creatures. The absence of colour acts as a reminder that insects are threatened and in sharp decline due to habitat loss, pesticides, pollution and climate change.

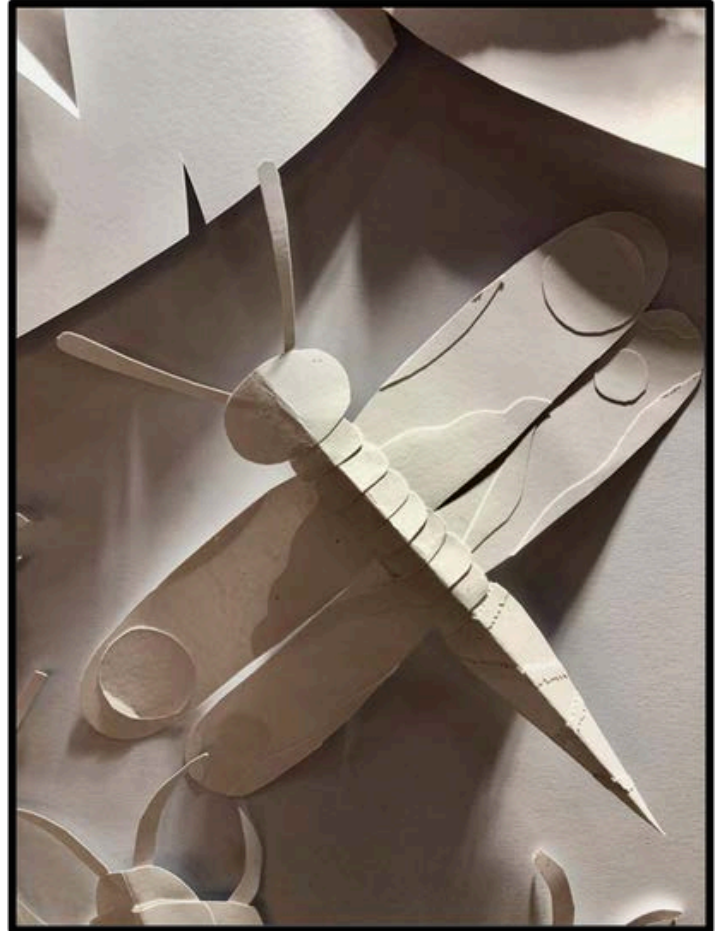
Did you know?

- Insects have been around for more than 350 million years, longer than the dinosaurs and flowering plants.

Find out more:

[Action for Insects campaign | The Wildlife Trusts](#)

Mr Tomlin, Teacher of Art and Textiles





## Year 7 Dive into Science with Energy and Enthusiasm!

The new academic year has kicked off with a bang for our Year 7 pupils at Chulmleigh! They have wasted no time immersing themselves in the world of science. Their curiosity, teamwork, and enthusiasm have made for an excellent start—and the lab has been buzzing with activity!

### Safety First: Learning the Rules of the Lab

Before diving into experiments, pupils have been thoroughly introduced to essential lab safety protocols. They have learned how to identify hazard symbols commonly found on chemical bottles—not just in the lab, but also around the school and at home. From corrosive substances to flammable materials, Year 7 now know how to spot and respond to potential dangers with confidence and care.

### Bunsen Burner Training: Lighting Up Learning

One of the highlights this week has been Bunsen burner training. Pupils have demonstrated how to safely light and use a Bunsen burner, mastering the technique with impressive precision. Watching them handle the equipment with such maturity has really impressed staff—especially as they begin to understand the importance of controlled flames and air holes!

### Getting to Know Our Equipment

The Science department at Chulmleigh is well-stocked with a wide range of equipment, and Year 7 have been busy exploring it. They have been challenged to identify which pieces of equipment are best for measuring volumes accurately—pipettes, measuring cylinders, beakers and conical flasks have all come under scrutiny. It's been fantastic to see pupils thinking critically about precision and reliability in scientific measurement.

### A Closer Look: Microscopes and Specimens

To round off their introduction to Science, pupils have had the chance to use microscopes to examine some truly fascinating specimens. From the intricate structure of a dragonfly wing to the fine details of rabbit hair, bee legs, and plant stems, Year 7 have been captivated by the hidden world revealed under the lens. Their reactions—ranging from awe to curiosity—have made these sessions a real joy.

With such a strong start, it's clear that Year 7 are well on their way to becoming confident and capable young scientists. We can't wait to see what discoveries lie ahead for them this year!

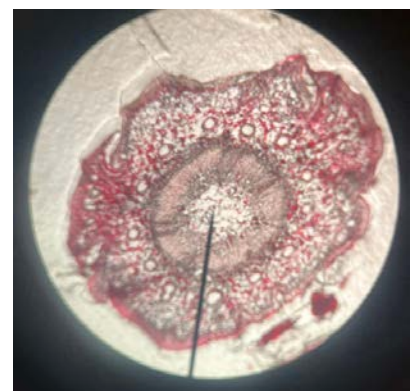
Mrs Murphy, Teacher of Science



Dragon Fly Wings



Honey Bee Leg



Pine Tree Stem

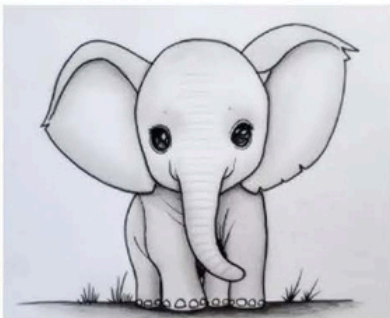




# Competition Time!



## HT6 Theme: **Animals**



### Ideas:

A day in the life of a...

Written from the POV of a...

The night I transformed into a...

How to look after a...

Please submit your art piece to **Mr Tomlin in T2**, or your written piece to **Mr Garrett in E7**, by **Monday 20<sup>th</sup> October**.

### First Prize:

**Art Stuff!**

### First Prize:

**£10** amazon voucher!

Create a piece of **art** (any form from a drawing to a collage).

**Write** no more than 500 words (any form, from poetry to a story).



Chulmleigh College

# Open Events

**Choosing a secondary school  
for September 2026 entry?  
Find out why we have such a  
great reputation.**



**Chulmleigh College**  
Nothing but our best

## **Open Evening**

Thursday 25 September 2025  
4.30pm to 7.00pm

- Tours of the College
- Interactive activities
- Showcasing of pupils' work
- Address by Neil Payne, Headteacher, at 6.30pm

## **Open Mornings**

Tuesday 30 September or  
Thursday 2 October 2025  
11.15am - 1.00pm

Come and see the College in  
action

- Tours of the College
- Meet the Senior Leadership Team



**To book please visit:** [www.chulmleigh.devon.sch.uk](http://www.chulmleigh.devon.sch.uk)

Or click on the links above

**We look forward to meeting you!**





Chulmleigh College

# Careers

# OPEN EVENT



## Bicton College



# SAT 4 OCT

10AM-12PM



FIND OUT MORE



# Bicton College TASTER DAY



# MON 27 OCT

10AM-3.30PM

Try a subject before you apply. Register by visiting [bicton.ac.uk](http://bicton.ac.uk)





Chulmleigh College

# Careers

State-funded sixth form

for **able** mathematicians

from **South West England**

**Bursary supported** boarding



# TASTER DAY

FOR YEAR 11 STUDENTS

Sign up to one of our free Saturday Taster Days to find out more about our school and to experience our **exciting** and **challenging** curriculum!

Choose from one of five events

4 October AM

4 October PM

18 October AM

18 October PM

29 November PM

Catchment area now including Bristol, Cornwall, Devon, Dorset, Gloucestershire, Somerset and Wiltshire

Find out more at [bit.ly/EMSadmissions](https://bit.ly/EMSadmissions)



[admissions@exeterms.ac.uk](mailto:admissions@exeterms.ac.uk) | 01392 429020 | [bit.ly/EMStaster25](https://bit.ly/EMStaster25)



Chulmleigh College

# Join Our Team



## TEACHING ASSISTANT at Chulmleigh College

Temporary, 30 hours per week term time only

Required from October 2025

Closing date:

10 am Monday 22 September 2025

Interview Date:

Monday 29 September 2025

The candidate pack and application form are  
available on our website:

[www.chulmleigh.devon.sch.uk](http://www.chulmleigh.devon.sch.uk)

To be emailed to:

[personnel@chulmleigh.devon.sch.uk](mailto:personnel@chulmleigh.devon.sch.uk)

## Printshop

### Full Colour Photocopying

from only 25p per A4 sheet

### Black & White Budget Printing

Single-sided from 5p per A4

Double-sided from 8p per A4

*Minimum of 50 copies per master*

Magazines, Posters, Invitations, Leaflets,  
Compliment slips, Flyers etc

*All designed to your specifications*

*Binding - Laminating*

*A professional service with the personal touch*

### Join Our Monthly Adult Reading Group

\*\*\*\*\*

### The Secret Book Quest

Our exciting new reading challenge is here,  
for children aged 5 and up

## Stationery Shop in the Library

Ballpoint Pen	10p	Compass	40p
Pencil	10p	Purple Pen (for response to marking)	30p
Eraser	10p	Book Wallets	30p
Pencil Sharpener	10p	Pack of 12 Colouring Pencils	£1.25
Protractor	15p	Clear Pencil Case	£1.00
15cm Ruler	15p	Gum Shield	£1.85
A5 Exercise Book	30p	Scientific Calculator	£13.50
Highlighter Pen	50p	Replacement Planner	£3.75
30cm Ruler	30p	Revision Study Cards	90p

550ml Chulmleigh College Purple Water Bottle with Straw £2.75

Exam Case £1.50

*clear pencil case containing 2 black ballpoint pens, pencil, eraser, pencil sharpener, highlighter pen and 30cm ruler*



All our Stationery is available for order through MyEd our online payment system and to be collected in the Library



## Chulmleigh College PTFA



PTFA Chulmleigh PTFA aims to support the school by raising funds throughout the year. This is done in various ways from cake stalls to preloved uniform sales. If you would like to get involved we would love to hear from you - many hands make light work!

Did you know that the PTFA stocks new school ties Dart (red); Mole (green); Taw (blue); and Yeo (purple). Each tie is available to purchase via MyEd for £6, your child can collect their new tie from Reception.

We also have a supply of preloved uniform. Ties and uniform can be purchased by completing this [form](#). You can contact us by emailing [PTFA@chulmleigh.devon.sch.uk](mailto:PTFA@chulmleigh.devon.sch.uk)

# Chulmleigh College

## PTFA

Parents, Teachers, Friends Association



## AGM

### Annual General Meeting

**MONDAY 29<sup>TH</sup> SEPTEMBER 2025**

**18:00**

Dartridge Hall  
Chulmleigh College  
Chulmleigh EX18 7AA

Please join us to find out more about how we work together for all our children



# HELP YOUR SCHOOL RECEIVE EXTRA FUNDING

**Plus £30 TOP-UP FOR SUCCESSFUL  
NEW APPLICANTS!**

## ARE YOU IN RECEIPT OF **ONE OR MORE** OF THE FOLLOWING **BENEFITS?**

If you are, please apply online for **FREE SCHOOL MEALS**.

**IT ONLY TAKES A MINUTE TO APPLY**, but your school may receive **EXTRA FUNDING**. Successful **NEW** applications made between **01.07.25** and **01.10.25** will receive a £30 MyEd+Pay account top-up.

### **ELIGIBLE BENEFITS:**

- Universal Credit
- Income-based and contribution-based JSA or ESA on an equal basis
- Income Support (IS)
- Income based jobseekers allowance (IBJSA)
- Income-related employment and support allowance (IRESA)
- Child Tax Credit
- Guaranteed Element of State Pension Credit
- Support under part VI of the Immigration and Asylum Act 1999

*It takes less than a minute  
to apply.*

Visit: [https://oneonline.devon.gov.uk/  
CCSCitizenPortal](https://oneonline.devon.gov.uk/CCSCitizenPortal) **LIVE**  
or call the Education Helpline on  
**0345 155 1019**

## PLEASE LET US KNOW IF A MEMBER OF YOUR FAMILY IS A **CURRENT** OR **PAST** MEMBER OF **THE ARMED FORCES**

Your school can receive **EXTRA FUNDING** if a parent has served any time in the last 6 years, or is in receipt of pensions under the Armed Forces Compensation Scheme (AFCS) and the War Pensions Scheme (WPS)

## PLEASE LET US KNOW IF YOU HAVE AN **ADOPTED CHILD**, A **RESIDENCE ORDER**, OR A **SPECIAL GUARDIANSHIP ORDER**

Your school can receive **EXTRA FUNDING**.

*If you have any queries, please speak to  
the admin staff at your school.  
Any information shared will be treated  
confidentially.*



## CHULMLEIGH ACADEMY TRUST

### School Terms and Holiday Dates - 2025/2026 Academic Year

	September					October					November				December					January					February															
College Week	1	2	1	2	1	1	2	1	2	3	1	2	1	2	1	2	1	2	3	1	2	1	2	1	2	1	2	1	2	1	2	1								
Monday	1	8	15	22	29		6	13	20	27	3	10	17	24	1	8	15	22	29		5	12	19	26	2	9	16	23	2	9	16	23	3	10	17	24				
Tuesday	2	9	16	23	30		7	14	21	28	4	11	18	25	2	9	16	23	30		6	13	20	27	3	10	17	24	4	11	18	25	4	11	18	25	4	11	18	25
Wednesday	3	10	17	24		1	8	15	22	29	5	12	19	26	3	10	17	24	31		7	14	21	28	4	11	18	25	5	12	19	26	5	12	19	26	5	12	19	26
Thursday	4	11	18	25		2	9	16	23	30	6	13	20	27	4	11	18	25			8	15	22	29	5	12	19	26	6	13	20	27	6	13	20	27	6	13	20	27
Friday	5	12	19	26		3	10	17	24	31	7	14	21	28	5	12	19	26			9	16	23	30	6	13	20	27	7	14	21	28	7	14	21	28	7	14	21	28

	March					April					May				June					July					August															
College Week	1	2	1	2	1	1	2	1	2	1	1	2	1	2	1	2	1	2	1	1	2	1	2	1	1	2	1	2	3	1	2	1								
Monday	2	9	16	23	30		6	13	20	27		4	11	18	25	1	8	15	22	29		6	13	20	27		3	10	17	24		3	10	17	24		3	10	17	24
Tuesday	3	10	17	24	31		7	14	21	28		5	12	19	26	2	9	16	23	30		4	11	18	25		4	11	18	25		4	11	18	25		4	11	18	25
Wednesday	4	11	18	25		1	8	15	22	29		6	13	20	27	3	10	17	24			1	8	15	22	29		1	8	15	22	29		1	8	15	22	29		
Thursday	5	12	19	26		2	9	16	23	30		7	14	21	28	4	11	18	25			2	9	16	23	30		2	9	16	23	30		2	9	16	23	30		
Friday	6	13	20	27		3	10	17	24		1	8	15	22	29	5	12	19	26			3	10	17	24	31		3	10	17	24	31		3	10	17	24	31		

- Bank Holidays**
- 25 December 2025
  - 26 December 2025
  - 01 January 2026
  - 03 April 2026 (Good Friday)
  - 06 April 2026 (Easter Monday)
  - 04 May 2026 (May Day)
  - 25 May 2026 (Spring Bank Holiday)
  - 24 August 2026 (Summer Bank Holiday)

**Non-Pupil Days**

Five days selected from within the term dates to be determined by the Board of Directors

- School Holidays**
- Occasional Holidays**
- Two days selected from within the term dates to be determined by the Board of Directors

**Chulmleigh College**  
Nothing but our best

**AUTUMN MENU · WEEK ONE**

	MONDAY	TUESDAY	WEDNESDAY	THURSDAY	FRIDAY
	Breakfast Brunch with Bacon, Sausages, Hash Browns and Beans	Spaghetti Bolognese with Garlic Bread & Salad	Roast Gammon, Roast Potatoes, Gravy, Parsnips, Carrots and Cabbage	Chicken, Ham & Sweetcorn Pie with New Potatoes, Salad & Coleslaw or Garden Peas	Jumbo Fish finger Sandwich with Lettuce, tartare sauce, New Potatoes and Garden Peas
	Vegetarian Breakfast Brunch with Quorn Sausage, Tomatoes & Beans	Vegetable Soft Shell Taco with Salad & New Potatoes	Chickpea and Sweet Potato Bake with Roast Potatoes, Parsnips, Carrots and Cabbage	Cheese and Onion Quiche with New Potatoes, Coleslaw or Garden Peas	Veggie Finger Sandwich with New Potatoes and Garden Peas
	Pasta Bar & Jacket Potatoes	Themed Menu Day	Pasta Bar & Jacket Potatoes	Themed Menu Day	Pasta Bar & Jacket Potatoes

HOMEMADE FRUITPOTS, DESSERTS & PASTA PIES  
*Available daily*

FRESHLY PREPARED SANDWICHES & BAGUETTES  
*Available daily*

BAKED JACKET POTATOES WITH A SPECIFICATION of fillings

HOMEMADE SOUP OF THE DAY WITH BREAD

We are pleased to offer a variety of allergen free options on our food menu. Although all food is prepared in a kitchen that handles most allergens and therefore we cannot guarantee that cross contamination will never occur, we do take every possible precaution to prevent this from happening.



AUTUMN MENU · WEEK TWO

Main ONE

Beef Chilli Con Carne with Rice, Nachos, Cheese, Guacamole & Sour Cream

Main TWO

Vegetarian 5 Bean Chilli with Nachos, Cheese, Guacamole & Sour Cream

Pasta BAR

Pasta Bar & Jacket Potatoes

TUESDAY

Steak & Vegetable Pie with Mashed Potato, Garden Peas & Carrots

Falafel Wraps with Mashed Potato, Carrots & Peas

Themed Menu Day

WEDNESDAY

Roast Pork with Roast Potatoes, Gravy, Stuffing, Parsnips, Carrots and Cabbage

Homity Pie with Roast Potatoes, Parsnips, Carrots and Cabbage

Pasta Bar & Jacket Potatoes

THURSDAY

Chicken Burger with Wedges & Peas or Salad & Coleslaw

Plant Based Burger with Wedges & peas or Salad & Coleslaw

Themed Menu Day

FRIDAY

Breaded Fish with Roasted New Potatoes & Peas or Beans

Vegetable Fajita with Roasted New Potatoes & Peas or Beans

Pasta Bar & Jacket Potatoes

HOMEBAKES, FRUITPOTS, DESSERTS & PASTA POTS Available daily

FRESHLY PREPARED SANDWICHES & BAGUETTES Available daily

BAKED JACKET POTATOES WITH A SPECIFICATION of fillings

Homemade SOUP OF THE DAY WITH BREAD

We are pleased to offer a variety of allergen free options on our food menu. Although all food is prepared in a kitchen that handles most allergens and therefore we cannot guarantee that cross contamination will never occur, we do take every possible precaution to prevent this from happening.



AUTUMN MENU · WEEK THREE

Main ONE

CURRY DAY  
Chicken Biryani with Rice & Naan

Main TWO

Cauliflower, Chickpea & Butternut Squash Korma with Rice & Naan

Pasta BAR

Pasta Bar & Jacket Potatoes

TUESDAY

Sweet and Sour Chicken with Rice, Sweetcorn & a Pineapple Chilli Salsa

Singapore Noodles

Themed Menu Day

WEDNESDAY

Roast Chicken with Roast Potatoes, Gravy, Parsnips, Carrots and Cabbage

Broccoli & Cheddar Quiche with Roast Potatoes, Parsnips, Carrots and Cabbage

Pasta Bar & Jacket Potatoes

THURSDAY

Chipolata Sausage & Mash with Gravy, Carrots & Peas

Vegetarian Sausage & Mash with Gravy, Carrots & Peas

Themed Menu Day

FRIDAY

Salmon Bites or Fish Fingers served with Diced Potatoes and Beans

Halloumi Stuffed Pepper with Diced Potatoes and Baked Beans

Pasta Bar & Jacket Potatoes

HOMEBAKES, FRUITPOTS, DESSERTS & PASTA POTS Available daily

FRESHLY PREPARED SANDWICHES & BAGUETTES Available daily

BAKED JACKET POTATOES WITH A SPECIFICATION of fillings

Homemade SOUP OF THE DAY WITH BREAD

We are pleased to offer a variety of allergen free options on our food menu. Although all food is prepared in a kitchen that handles most allergens and therefore we cannot guarantee that cross contamination will never occur, we do take every possible precaution to prevent this from happening.



Chulmleigh College

# PRICE LIST

TOAST (Morning Break)	£0.41	CEREAL (Morning Break)	£0.41
MAIN MEAL	£2.20	PIZZA SLICE	£1.50
MEAL DEAL (MAIN MEAL & HOMEBAKE OR PASTA & HOMEBAKE)	£2.61	SOUP & ROLL	£1.15
SALAD BOX	£2.15	SNACK ITEMS	£0.75
PASTA BAR	£2.00	ROLL & BUTTER	£0.60
GRAB & GO	£1.95	PASTY	£2.00
JACKET POTATO (1 FILLING)	£1.65	ETON MESS	£1.25
JACKET POTATO (2 FILLINGS)	£2.15	CHEESECAKE	£1.25
BAGUETTES	£1.95	FRUIT POT	£1.25
PANINIS	£1.95	YOGHURT POT	£0.95
1/2 PANINI	£1.00	JELLY POT	£0.95
SANDWICHES	£1.90	MUFFIN	£1.20
WRAPS	£1.90	HOMEBAKE	£0.90
		TAKEAWAY BOX	£0.15

