



Chulmleigh College

RECEPTION: 01769 580215

PUPIL ABSENCE LINE: 01769 582120

EMAIL: admin@chulmleigh.devon.sch.uk



OPTIME

marketing@chulmleigh.devon.sch.uk

12 December 2025



Christmas Concert

Dear Parents and Carers

As the doors on our Advent Calendars fall increasingly open – we look back on this penultimate week of term and everything that has been achieved.

The last three weeks have been dominated by our Year 11 Mock Examinations and I have written previously about the sense of industriousness that has come from the majority of our Year 11 pupils. Teaching staff have largely turned over every free minute available now to provide marked work and feedback and for Year 11. This is where we will form a very clear picture of what pupils need to do to hit and exceed their target grades. I know pupils have felt the pressure of this mock series but I also know they have grown from it. I spent assembly time with Year 11 on Monday talking about what is to come and we are now well and truly on the home straight to GCSE exams and the end of their schooling at Chulmleigh. Five years does really pass in a flash.

Elsewhere this week our Christmas concert was a predictable highlight with remarkable work from pupils across the year groups. It was also absolutely charming and wonderful for Mrs Wright to attend the concert with two of her pupils from Lapford Primary School. Our Trust of 4 schools is all about community and working together for the common good and it was simply wonderful to have musicians from Lapford School front and centre at our concert. The standard generally seems to get higher and higher each year and the CMAC choir of 2025/26 is a magnificent 60 pupils strong. There were too many pupils who were exceptional to mention but I am so grateful to them and also to the staff who gave up their time to perform in the orchestra. The Christmas themed second half really did signify that Christmas is here!

Finally, you may have seen our press releases that we had a pleasant surprise at the beginning of the week with Chulmleigh College named 15th best 11-16 school nationally by the Sunday Times Parent Power League Table. We have been a great school for many, many years but it is quite wonderful to see that recognition in a national publication such as the Sunday Times. This accolade really belongs to the pupils and staff at the school over the last few years and also is thanks to the steadfast support for our model of education we receive from parents.

Mr Payne, Headteacher



Chulmleigh College

Year 11 Fundraiser





Christmas Concert

We were delighted to hold our Christmas Music Concert this week and hear what our very talented group of school musicians have been working on this term. The concert was split into two halves with the first half featuring our College Choir singing a beautiful arrangement of Hold Back The River. Some of our pupils showcased individual items which they have been working on and a particular mention must go to some of our Year 7 musicians who had the courage and skill to perform solo pieces in their very first Chulmleigh Music Concert.

The second half allowed us to turn our attentions to Christmas and we had a large variety of Christmas classics being played by all our different ensembles, from White Christmas and Jingle Bells, to more modern hits such as All I Want For Christmas Is You.

A huge well done to all our talented music pupils who put on a great end of term festive show, helped out by our PTFA who had parents queuing up for mulled wine, mince pies and hot chocolate!

Mr Miners, Teacher of Music



Cakes Worth Talking About: Year 9's Creative Triumph

This term our talented Year 9 pupils rolled up their sleeves, switched on their creativity, and produced a stunning range of novelty cakes - each one designed with the ambition of sitting proudly on supermarket shelves. From playful animal characters to colourful Christmas cakes, the pupils worked through every step of the professional design process.

They began by researching current food trends and popular retail products, then sketched their own unique ideas before bringing them to life in the kitchen.

The results were nothing short of impressive. Carefully shaped sponges, vibrant icing, and imaginative decorations showed not only technical skill but real creative flair.

Teachers and pupils alike were amazed by the originality and high standard of the finished cakes. Many looked ready for commercial packaging, complete with eye-catching themes that would tempt any shopper.

The project was more than just baking - it encouraged problem-solving, teamwork, and pride in craftsmanship. Year 9 should feel incredibly proud of what they achieved. Their novelty cakes proved that with passion and practice, even young designers can create products fit for the real world.

A huge well done to all involved!

Miss Talbot, Food and Nutrition Technician





Festive Christmas Bake Off!

Pupils from across the College impressed us once again with their creativity and culinary skills in this year's annual Christmas Bake Off. From festive cakes to imaginative holiday treats, each entry showcased amazing effort and Christmas spirit. We are so proud of everyone who took part and helped make the competition so much fun. It was a display of fantastic display of delicious festive delights! Congratulations to Ollie Murphy for taking first place with his incredible gingerbread house.

Miss Gower, Teacher of Food and Nutrition





U9 – U12 Rugby Union Concussion & Brain Health Project

Chulmleigh College had the pleasure of hosting Wayne Reed into school with several of the Year 7 rugby team. He works for England Rugby who are working on a joint project with the other home unions (Ireland, Scotland, and Wales) to create fun, age-appropriate resources that help children aged 8–12 understand brain health and concussion in rugby. To make these resources truly effective, we want to hear from children themselves, gaining their insights, ideas, and understanding of what works and what makes sense.

Although the risk of concussion in these age groups is very low, we believe education at this stage is essential for building awareness and developing safe habits early. By teaching children, parents, and coaches what concussion is, how to recognise symptoms, and why proper recovery matters, we aim to create a strong foundation for lifelong player welfare in rugby.

This session included a series of classroom-based activities designed to allow children to share their thoughts and feedback on concepts and ideas, helping us co-design these resources.

If you have any questions about the project, please feel free to contact:

- Rachel Faulf-Brown (England Rugby, Player Welfare Manager)
- Email: rachelfaulf-brown@rfu.com
- Dr Stephanie Adams (Lead Consultant, ConcussED)
- Email: stephanie@concussioneducation.co.uk

Together, we can make rugby safer and smarter for young players!



Devon Cross Country Championships

On Sunday 7th December Year 10 pupil, Sophie Casavieille-Lacaze, competed in the Devon Cross Country Championships. She faced a very strong field, running alongside top athletes from both Devon and Cornwall in the 3.5km race. Despite the extremely muddy conditions, she put in an impressive performance and maintained a positive attitude throughout, securing a fantastic 10th place for Devon.

Well done Sophie!





Christmas

Thank You Mr Cockram!

Every year Mr Cockram, from Chulmleigh Hill Christmas Trees, kindly donates a beautiful Christmas tree to the College. It always takes pride of place by the flag pole, at the centre of the College grounds, and adds to the excitement of the festive season. We would like to express our heart felt thanks to Mr Cockram for this generous gift that is enjoyed by the whole of our College community.

Christmas Card Competition Winners

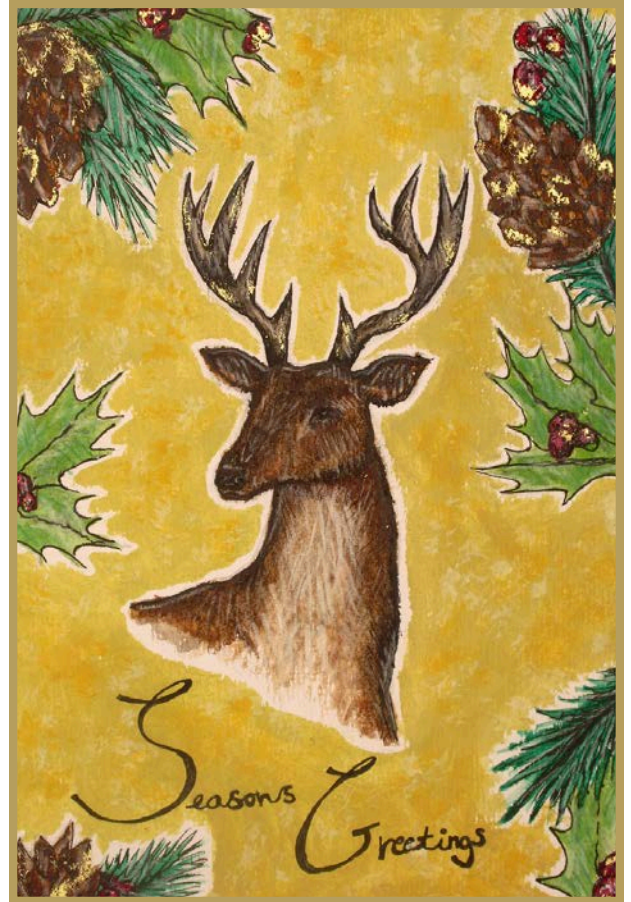
This year's Christmas card competition brought out exceptional creativity, and our two winning pupils proudly showcased their designs beside the College Christmas tree.

The winning design is by Year 9 pupil, Ruby Chanter, featuring a striking hand-drawn deer surrounded by winter foliage, offering a warm and elegant interpretation of Christmas.

Second prize goes to Year 8 pupil, Calley Fletcher, who has created a vibrant, multi-panel design to illustrate the 12 days of Christmas. Calley's design is full of colour and detail, capturing the lively spirit of the season.

Both pupils demonstrated outstanding artistic skill and originality. Their work will help spread festive joy throughout the College community, and we congratulate them on their well-deserved success.

Well done!





CHOOSE AND CUT **CHRISTMAS TREES**

CHULMLEIGH HILL **CHRISTMAS** **TREE FARM**

OPEN FRIDAYS, SATURDAYS AND SUNDAYS



Fri 28th, Sat 29th & Sun 30th Nov
Fri 5th, Sat 6th & Sun 7th Dec
Fri 12th, Sat 13th & Sun 14th Dec
Fri 19th, Sat 20th & Sun 21st Dec

9.30am - 3.30pm

Find us on the B3096 between
Chawleigh & Chulmleigh - EX18 7ES

Traditional Norway Spruce • Low Needle Drop Nordmann Fir
Freshly Made Wreaths • Stands

★ **www.johncockramchristmastrees.co.uk** ★

Tel: 07724 079733 Email: johncockram@hotmail.co.uk

Member of The British Christmas Tree Growers Association





Christmas Jumper Day - Friday 19th December

Pupils are invited to wear their Christmas Jumpers to school on Friday 19th December in exchange for a **£1 donation** made via **MyEd Shop** (cash will not be accepted on the day). Proceeds from Christmas Jumper Day will be split between donations to charity and used to support the costs of our end of Year 11 celebrations for all families. We are now annually fundraising for this purpose to help manage the costs of our Year 11 Leavers' ball, Hoodies and other celebrations.

Christmas jumpers should be worn as an addition to standard school uniform.



Christmas Lunch

Our Christmas lunch takes place on **Friday 19th December** and orders may be placed via the MyEd +Pay. The Christmas lunch is a turkey or vegetarian option, a dessert, and a cracker. On this day there is no additional food available in the canteen during break or lunchtime and therefore we ask that pupils bring in a breacktime snack and a packed lunch should your child not be having a Christmas lunch. Christmas lunch may now be booked, and **orders must be placed no later than Sunday 14th December please.**

Pupils who are eligible for free school meals **MUST** also book their meal via MyEd+Pay to make their selection.

All Christmas lunch bookings should be made via:

MyEd App > My Students > Payments > Accounts > Select: Christmas Lunch Friday 19th December 2025 > Select: Friday 19th for Meal Selections > Pay Now > Confirm > Checkout.



Chulmleigh College

Christmas Lunch Menu

Roast Turkey,
pigs in blankets, sage
and onion stuffing,
gravy and cranberry
sauce

Or

Roasted butternut
squash and cauliflower
in a delicate thyme and
cheese sauce tartlet

Served with crispy roast
potatoes, garden peas
brussel sprouts and
baton carrots

Strawberry and vanilla
ice cream tub

Or

A festive iced cookie
Christmas crackers
Squash to drink



Report an absence due to an illness

- Use ClassCharts
- Click on your child's initial.
- Select REPORT ABSENCE.
- REPORT NEW ABSENCE.
- Enter Date of Absence.
- Enter reason for absence i.e. *Temperature and Headache*



ClassCharts can be accessed via MyEd

- Click on School Information
- Select ClassCharts



Diary dates...

DECEMBER

Mon 15 - Thurs 18 Dec:

Year 11 mocks

Fri 19 Dec:

Christmas Church Service

Christmas Lunch

Christmas Jumper Day

Sweet Sale £1 cash

Last Day of Term

JANUARY

Tues 6 Jan:

Spring Term Begins

Sat 10 or Sun 11 Jan TBC:

Dartmoor Discovery Day Walk 4

Mon 12 - Fri 16 Jan:

Scholar Awards

Mon 12 Jan:

Year 11 Mock Results Day

Thurs 15 Jan:

Year 11 Parents Evening

Sat 24 - Sun 25 Jan:

Dartmoor Discovery Camp 1

February

Mon 2 - Fri 6 Feb:

Year 7 Assessment Week

Thurs 5 Feb:

Year 10 Parents Evening

Mon 9 - Fri 13 Feb:

Year 10 Speaking Mocks

Thurs 12 Feb:

Immunisation Team - Year 9

Mon 16 - Fri 20 Feb:

Half Term



Photography
CHALLENGE

Writing
CHALLENGE

Chulmleigh has gone

GOthic ...

Gothic is our HT2 theme!

Please submit your art piece to **Mr Tomlin in A1**, photography to **Ms Lawrence in T1**, or your written piece to **Mr Garrett in E7**, by **Tuesday 16th December**.

First Prize:
Art equipment
Create a piece of art (any form, from a drawing to a collage).

First Prize:
It's a surprise!
Take a gothic photo – nature, architecture, fashion... get creative!

First Prize:
£10  **voucher**
Write no more than 500 words (any form, from poetry to a story).



Year 11 Leavers

Hoodie Shop

Pupils have the option to purchase a hoodie to commemorate their leaving date at the College. These hoodies can be purchased at an 'early bird' price, hence this information is being communicated to you earlier in the year than usual.

To order and pay for a hoodie, please follow the link to the online shop here:

<https://www.leavershoodies.com/chulmleigh-community-college-2026-yr11-leavers>

The deadline is 11.00pm on 31st January 2026, any orders after this date will not be accepted.

Please choose your size carefully. All items are custom made to order, so returns or exchanges for incorrect sizes will not be accepted. Check the size guide for detailed measurements.

Leavers' hoodies are given out on the last day of Year 11, Monday 15th June 2026.



Calling All Young Photographers!

Do you love taking photos? Have a creative eye for capturing the beauty of the world around you? Then this is your moment!

The Rotary Young Photographer Competition 2025-26 is now open—and this year's theme is "Happiness in Nature." Whether it's a sunlit forest, a playful pet, or a peaceful moment in the garden, you're invited to show what happiness in nature means to you.

Be imaginative! Your photo doesn't need to follow a strict definition—just express your own unique view.

Who Can Enter?

There are three age categories:

- Junior: Up to 10 years old
- Intermediate: Ages 11-13
- Senior: Ages 14-17 (Age as of 31 August 2025)

What You Need to Do

- Submit one photo in digital format (JPG, minimum 1500 pixels).
- Include a short sentence explaining how your photo fits the theme.
- Make sure you have permission if your photo includes people.

Why Enter?

- Develop your photography skills.
- Showcase your creativity.
- Progress through local, district, and national stages.
- Win recognition and prizes!

Deadline: Friday 20 February 2026

For entry forms and full details, visit the Rotary Young Photographer Competition page or speak to your art/photography teacher.

Let your lens tell a story—get snapping and show us your version of Happiness in Nature!

Rotary **YOUNG PHOTOGRAPHER** COMPETITION



INFORMATION PACK

2025-26

For further information please follow this link:

<https://tinyurl.com/mpzrmk6s>



ROTARYGBI.ORG



The entry form can be found here:

<https://tinyurl.com/53bw5xcx>



School holidays adding to your energy costs?



Our energy team can help



Call us on **01237 879 233** to see if you're eligible for help with fuel vouchers and grants, and to receive tips on how to cut your bills



Need advice on energy?

Our dedicated energy team are here to help you:

- Check for grants to help you pay for your energy usage
- Apply energy-saving measures to save you money
- Talk to your supplier to sort out any problems you might be having

Call us on **01237 879 233**

Scan the QR code to fill out a referral form



www.citizensadvicetnmwd.org.uk Registered charity number 1068496



Devon Children & Young People's Neurodiversity Navigators

A free, confidential wellbeing service supporting children, young people and their families navigating neurodiversity.

Contact Us

livewell.devonndnavigators@nhs.net
Monday - Friday
9am-5pm

What we do

- Information and guidance relating to specific aspects of neurodiversity
- Objective, evidence-based advice and positive support strategies
- Active listening and practical and emotional support
- Connect with other teams and external services to help co-ordinate your journey
- Connect families to enable peer support and connection



Have your say

We are interested in hearing about the lived experiences of young people and their families. Your views and experiences allow us to develop our team, and tailor the services we provide to improve the support for our families and young people.

We support people to lead independent, healthy lives



School aged vaccinations

Did you know children will be offered these routine vaccinations at school?

- ✓ **FLU** - Reception - Year 11
- ✓ **MMR** - Catch-up
- ✓ **HPV** - Year 8 - Year 11
- ✓ **Meningitis ACWY** - Year 9 - Year 11
- ✓ **Diphtheria, Tetanus, Polio (DTP)** - Year 9 - Year 11

HPV

MENINGITIS ACWY

DIPHTHERIA TETANUS POLIO (DTP)

Did you miss us?

We also have community clinics across Devon for:

- ✓ Home educated children
- ✓ Anxious children
- ✓ Children who missed the session at school



For further information scan the QR code or please speak with a member of the team

Call us on

01392 342678

Kernowhealthcic.schoolimmsdevon@nhs.net



MATHS

PUZZLE OF THE WEEK

Hand-in:
Red Box in M2 or

MathsPOW@chulmleigh.devon.sch.uk

by 3:14 pm next Monday for a chance to be this week's MathsPOW Champion!

There are prizes for all entries and a special reward for the overall winner!



\sqrt{x}



π

+

=

Last week's answer:

Last Week's Solution

Letters: $26 \times 26 = 676$

Digits: $10 \times 10 \times 10 \times 10 = 10,000$

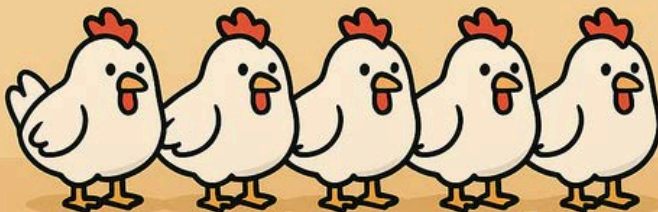
Total codes: $676 \times 10,000$

- ✓ There are 6,760,000 different possible codes.



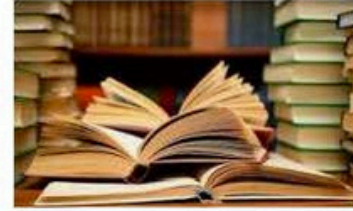
The chickens on the school farm are very regular. The first chicken lays every day, the second every 2nd day, the third every 3rd day, and so on until the sixth.

How many eggs will be laid during 2025 by the six chickens on the farm?



Accelerated Reader

156,477,271 words read so far this year.



Average daily minutes per tutor group. This is based on the books students have quizzed since September 4th.

| Class | Average daily minutes |
|-------|-----------------------|
| 7CP | 46 |
| 7PL | 45 |
| 7EM | 42 |
| 7NS | 42 |
| 7RM | 33 |
| 7KP | 30 |

| Class | Average daily minutes |
|-------|-----------------------|
| 8KO | 48 |
| 8JM | 42 |
| 8ET | 41 |
| 8TR | 37 |
| 8HG | 34 |
| 8AH | 30 |

| Class | Average daily minutes |
|-------|-----------------------|
| 9NM | 33 |
| 9LG | 33 |
| 9JP | 32 |
| 9DH | 31 |
| 9VC | 28 |
| 9SF | 24 |



The Chulmleigh PTFA works hard to support our school community by raising funds throughout the year. From cake stalls to preloved uniform sales, there are plenty of fun ways to get involved. We'd love your help — many hands make light work! Come and chat with us at one of our events, drop into a meeting, or email ptfa@chulmleigh.devon.sch.uk to find out more.

HOW YOU CAN HELP

Uniform & Home Baked Goodies

The PTFA relies on your kind donations of school uniform and delicious home-baked treats!

Uniform donations: please drop off clean, good-quality school uniform at reception.

Preloved items: available to purchase through the College website [Chulmleigh College - Second-hand Uniform](#)

New school ties: can be bought via the MyEd shop.

For your child's parents' evening we'd love your help by bringing along cakes, cookies, or other tasty treats to sell at the event — every contribution makes a difference!

LET'S GROW TOGETHER IN 2026

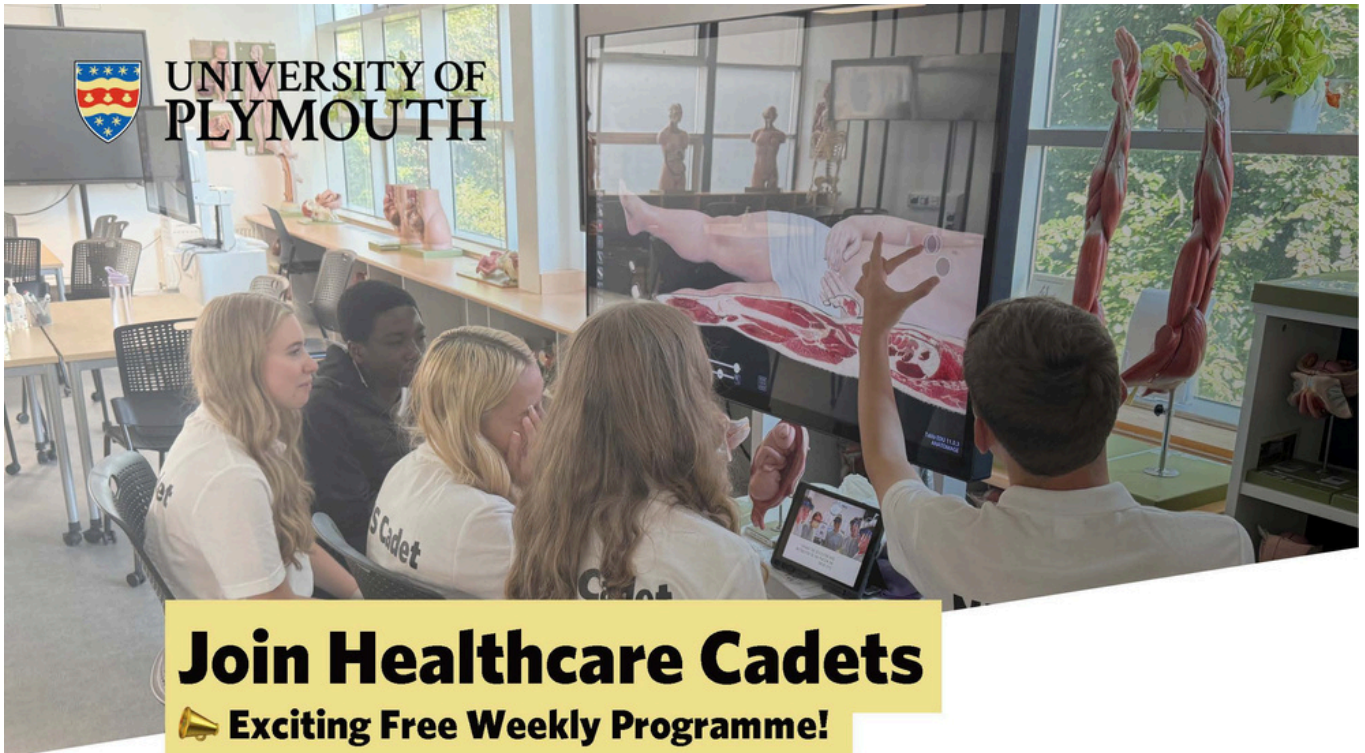
By joining the PTFA, you are supporting not just your child, but every child in our school. Your ideas, presence and support help build a stronger, more connected community. We would love to have you with us! Why not join us at our next meeting on Monday 26th January at 6pm.

Wishing you a Merry Christmas and a Happy New Year from all members of the Chulmleigh College PTFA

PTFA Events & Meetings

- Year 11 Parents Evening
15/01/26
- PTFA Meeting 26/01/26 6pm
Dartridge Hall
- Coffee Morning 21/03/26
Chulmleigh Town Hall -
Refreshments, baked goods,
raffle prizes





Are you aged **13-16** and interested in a career in healthcare?

This new year join us for one of our **free, fun, and interactive Healthcare Cadets programmes**, hosted at the University of Plymouth.

🩺 **What is Healthcare Cadets?**

Run by the **University of Plymouth**, this programme gives young people the chance to explore a variety of healthcare roles — and gain invaluable experience!

💬 **What's included?**

- ✓ Guest speakers: doctors, nurses, paramedics, and more
- ✓ Tour of an ambulance
- ✓ Explore university healthcare facilities
- ✓ Meet new people & build skills
- ✓ Certificate of achievement signed by the University of Plymouth



📅 **Weekly Programme**

- 📍 **For ages:** 13-16
- 📍 **When:** Thursday evenings
- 📍 **Dates:** January to April 2026
- 📍 **Sign up:** <https://gck.fm/cmraq>

🌟 Don't miss this fantastic opportunity to discover healthcare!

📧 **Questions?** Email: Joseph.Fowler@students.plymouth.ac.uk



Admissions policy for 2027-28: Annual Consultation

Along with all other schools and academies in Devon, we are consulting on an admission policy for 2027-28. The Local Authority is also consulting on its arrangements – the admissions schemes through which you can apply. You are invited to look at the proposal new policies which are based on policies for this year and next year and to have your say on them.

Our proposed policy is on our admission page [Chulmleigh College Proposed Admission Policy 2027-2028](#) and you can see all policies at <http://devon.cc/schoolpolicy>. Further information is here: www.devon.gov.uk/admissionarrangements.

The consultation runs between 1 November and 16 January 2026.

Policies will be determined by the end of February and published in the same places by 15 March 2026 next year. You can comment at schoolsadmissionpolicy-mailbox@devon.gov.uk or by emailing the school.



Chulmleigh College

Join Our Team



HEAD OF PRIMARY EDUCATION Permanent, Part Time (0.6fte)

Leadership Scale L13-L15 (£69596-73,105 pro-rata)
at Chulmleigh Academy Trust

Required from April or September 2026

Closing date:

10 am Thursday 8 January 2026

Interview Date:

Monday 19 and Tuesday 20 January 2026

The candidate pack and application form
are available on our website:

www.chulmleigh.devon.sch.uk

To be emailed to:

personnel@chulmleigh.devon.sch.uk



CATERING ASSISTANT

Part time, permanent,
10 hours per week X 39 weeks per annum

Grade A: £12.65 per hour
at Lapford Primary School

Required from January 2026

Closing date:

10 am Tuesday 6 January 2026

Interview Date:

Wednesday 14 January 2026

The candidate pack and application form
are available on our website:

www.chulmleigh.devon.sch.uk

To be emailed to:

personnel@chulmleigh.devon.sch.uk

Printshop

Full Colour Photocopying
from only 25p per A4 sheet

Black & White Budget Printing

Single-sided from 5p per A4
Double-sided from 8p per A4
Minimum of 50 copies per master

Magazines, Posters, Invitations, Leaflets,
Compliment slips, Flyers etc

All designed to your specifications

Binding - Laminating

A professional service with the personal touch

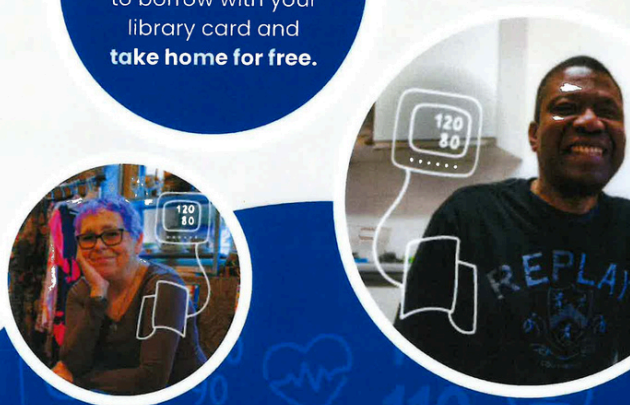
Join Our Monthly Adult Reading Group

The Secret Book Quest



Our exciting new reading challenge is here,
for children aged 5 and up

**Available
in
Chulmleigh
Library**

Blood pressure monitors are now available in libraries to borrow with your library card and **take home for free.**



**CHECK YOUR
BLOOD PRESSURE**

Libraries Unlimited is a registered charity, 1170692. To donate, please visit librariesum.lmfn.org.uk

Stationery Shop in the Library

| | | | |
|------------------|-----|--------------------------------------|--------|
| Ballpoint Pen | 10p | Compass | 40p |
| Pencil | 10p | Purple Pen (for response to marking) | 30p |
| Eraser | 10p | Book Wallets | 30p |
| Pencil Sharpener | 10p | Pack of 12 Colouring Pencils | £1.25 |
| Protractor | 15p | Clear Pencil Case | £1.00 |
| 15cm Ruler | 15p | Gum Shield | £1.85 |
| A5 Exercise Book | 30p | Scientific Calculator | £13.50 |
| Highlighter Pen | 50p | Replacement Planner | £3.75 |
| 30cm Ruler | 30p | Revision Study Cards | 90p |

550ml Chulmleigh College Purple Water Bottle with Straw £2.75

Exam Case £1.50

clear pencil case containing 2 black ballpoint pens, pencil, eraser, pencil sharpener, highlighter pen and 30cm ruler



All our Stationery is available for order through MyEd our online payment system and to be collected in the Library



Chulmleigh College

Ivor Marsh Library



THE IVOR MARSH LIBRARY

Murder Investigation in the Analog Age

A talk by Retired Detective Peter, a Chulmleigh Resident



Wednesday 10th December - 11am

Tel: 01769 582126 to book a place

Open Tuesday, Wednesday or Thursday for more information

Libraries, helping to build happy, healthy communities

CHULMLEIGH ACADEMY TRUST School Terms and Holiday Dates - 2025/2026 Academic Year

| | September | | | | | October | | | | | November | | | | | December | | | | | January | | | | | February | | | | |
|--------------|-----------|----|----|----|----|---------|----|----|----|----|----------|----|----|----|---|----------|----|----|----|----|---------|---|----|----|----|----------|---|----|----|----|
| College Week | 1 | 2 | 1 | 2 | 1 | 1 | 2 | 1 | 2 | 1 | 1 | 2 | 1 | 2 | 1 | 1 | 2 | 1 | 2 | 1 | 1 | 2 | 1 | 2 | 1 | 1 | 2 | 1 | 2 | 1 |
| Monday | 1 | 8 | 15 | 22 | 29 | | 6 | 13 | 20 | 27 | 3 | 10 | 17 | 24 | | 1 | 8 | 15 | 22 | 29 | | 5 | 12 | 19 | 26 | | 2 | 9 | 16 | 23 |
| Tuesday | 2 | 9 | 16 | 23 | 30 | | 7 | 14 | 21 | 28 | 4 | 11 | 18 | 25 | | 2 | 9 | 16 | 23 | 30 | | 6 | 13 | 20 | 27 | | 3 | 10 | 17 | 24 |
| Wednesday | 3 | 10 | 17 | 24 | | 1 | 8 | 15 | 22 | 29 | 5 | 12 | 19 | 26 | | 3 | 10 | 17 | 24 | 31 | | 7 | 14 | 21 | 28 | | 4 | 11 | 18 | 25 |
| Thursday | 4 | 11 | 18 | 25 | | 2 | 9 | 16 | 23 | 30 | 6 | 13 | 20 | 27 | | 4 | 11 | 18 | 25 | | 1 | 8 | 15 | 22 | 29 | | 5 | 12 | 19 | 26 |
| Friday | 5 | 12 | 19 | 26 | | 3 | 10 | 17 | 24 | 31 | 7 | 14 | 21 | 28 | | 5 | 12 | 19 | 26 | | 2 | 9 | 16 | 23 | 30 | | 6 | 13 | 20 | 27 |

| | March | | | | | April | | | | | May | | | | | June | | | | | July | | | | | August | | | | | |
|--------------|-------|----|----|----|----|-------|----|----|----|----|-----|---|----|----|----|------|----|----|----|----|------|---|----|----|----|--------|---|----|----|----|----|
| College Week | 1 | 2 | 1 | 2 | 1 | 1 | 2 | 1 | 2 | 1 | 1 | 2 | 1 | 2 | 1 | 1 | 2 | 1 | 2 | 1 | 1 | 2 | 1 | 2 | 1 | 1 | 2 | 1 | 2 | 1 | |
| Monday | 2 | 9 | 16 | 23 | 30 | | 8 | 15 | 22 | 29 | | 4 | 11 | 18 | 25 | 1 | 8 | 15 | 22 | 29 | | 6 | 13 | 20 | 27 | | 3 | 10 | 17 | 24 | |
| Tuesday | 3 | 10 | 17 | 24 | 31 | | 7 | 14 | 21 | 28 | | 5 | 12 | 19 | 26 | 2 | 9 | 16 | 23 | 30 | | 7 | 14 | 21 | 28 | | 4 | 11 | 18 | 25 | |
| Wednesday | 4 | 11 | 18 | 25 | | 1 | 8 | 15 | 22 | 29 | | 6 | 13 | 20 | 27 | 3 | 10 | 17 | 24 | | | 1 | 8 | 15 | 22 | 29 | | 5 | 12 | 19 | 26 |
| Thursday | 5 | 12 | 19 | 26 | | 2 | 9 | 16 | 23 | 30 | | 7 | 14 | 21 | 28 | 4 | 11 | 18 | 25 | | | 2 | 9 | 16 | 23 | 30 | | 6 | 13 | 20 | 27 |
| Friday | 6 | 13 | 20 | 27 | | 3 | 10 | 17 | 24 | | 1 | 8 | 15 | 22 | 29 | 5 | 12 | 19 | 26 | | | 3 | 10 | 17 | 24 | 31 | | 7 | 14 | 21 | 28 |

Bank Holidays



- 25 December 2025
- 26 December 2025
- 01 January 2026
- 03 April 2026 (Good Friday)
- 06 April 2026 (Easter Monday)
- 04 May 2026 (May Day)
- 25 May 2026 (Spring Bank Holiday)
- 24 August 2026 (Summer Bank Holiday)

Non-Pupil Days



Five days selected from within the term dates to be determined by the Board of Directors

School Holidays



Occasional Holidays



Two days selected from within the term dates to be determined by the Board of Directors

CHULMLEIGH ACADEMY TRUST School Terms and Holiday Dates - 2026/2027 Academic Year

| | September | | | | | October | | | | | November | | | | | December | | | | | January | | | | | February | | | | |
|--------------|-----------|----|----|----|----|---------|---|----|----|----|----------|----|----|----|----|----------|----|----|----|----|---------|---|----|----|----|----------|---|----|----|----|
| College Week | 1 | 2 | 1 | 2 | 1 | 1 | 2 | 1 | 2 | 1 | 2 | 1 | 2 | 1 | 2 | 1 | 2 | 1 | 2 | 1 | 1 | 2 | 1 | 2 | 1 | 1 | 2 | 1 | 2 | 1 |
| Monday | | 7 | 14 | 21 | 28 | | 5 | 12 | 19 | 26 | 2 | 9 | 16 | 23 | 30 | | 7 | 14 | 21 | 28 | | 4 | 11 | 18 | 25 | | 1 | 8 | 15 | 22 |
| Tuesday | | 8 | 15 | 22 | 29 | | 6 | 13 | 20 | 27 | 3 | 10 | 17 | 24 | | 1 | 8 | 15 | 22 | 29 | | 5 | 12 | 19 | 26 | | 2 | 9 | 16 | 23 |
| Wednesday | | 9 | 16 | 23 | 30 | | 7 | 14 | 21 | 28 | 4 | 11 | 18 | 25 | | 2 | 9 | 16 | 23 | 30 | | 6 | 13 | 20 | 27 | | 3 | 10 | 17 | 24 |
| Thursday | 3 | 10 | 17 | 24 | | 1 | 8 | 15 | 22 | 29 | 5 | 12 | 19 | 26 | | 3 | 10 | 17 | 24 | 31 | | 7 | 14 | 21 | 28 | | 4 | 11 | 18 | 25 |
| Friday | 4 | 11 | 18 | 25 | | 2 | 9 | 16 | 23 | 30 | 6 | 13 | 20 | 27 | | 4 | 11 | 18 | 25 | | 1 | 8 | 15 | 22 | 29 | | 5 | 12 | 19 | 26 |

| | March | | | | | April | | | | | May | | | | | June | | | | | July | | | | | August | | | | | |
|--------------|-------|----|----|----|----|-------|---|----|----|----|-----|----|----|----|----|------|----|----|----|----|------|---|----|----|----|--------|---|----|----|----|----|
| College Week | 2 | 1 | 2 | 1 | 2 | 1 | 2 | 1 | 2 | 1 | 1 | 2 | 1 | 2 | 1 | 1 | 2 | 1 | 2 | 1 | 1 | 2 | 1 | 2 | 1 | 1 | 2 | 1 | 2 | 1 | |
| Monday | 1 | 8 | 15 | 22 | 29 | | 5 | 12 | 19 | 26 | 3 | 10 | 17 | 24 | 31 | | 7 | 14 | 21 | 28 | | 5 | 12 | 19 | 26 | | 2 | 9 | 16 | 23 | |
| Tuesday | 2 | 9 | 16 | 23 | 30 | | 6 | 13 | 20 | 27 | 4 | 11 | 18 | 25 | | 1 | 8 | 15 | 22 | 29 | | 6 | 13 | 20 | 27 | | 3 | 10 | 17 | 24 | |
| Wednesday | 3 | 10 | 17 | 24 | 31 | | 7 | 14 | 21 | 28 | 5 | 12 | 19 | 26 | | 2 | 9 | 16 | 23 | 30 | | 7 | 14 | 21 | 28 | | 4 | 11 | 18 | 25 | |
| Thursday | 4 | 11 | 18 | 25 | | 1 | 8 | 15 | 22 | 29 | 6 | 13 | 20 | 27 | | 3 | 10 | 17 | 24 | | | 1 | 8 | 15 | 22 | 29 | | 5 | 12 | 19 | 26 |
| Friday | 5 | 12 | 19 | 26 | | 2 | 9 | 16 | 23 | 30 | 7 | 14 | 21 | 28 | | 4 | 11 | 18 | 25 | | | 2 | 9 | 16 | 23 | 30 | | 6 | 13 | 20 | 27 |

Bank Holidays



- 25 December 2026
- 28 December 2026
- 01 January 2027
- 26 March 2027 (Good Friday)
- 29 March 2027 (Easter Monday)
- 03 May 2027 (May Day)
- 31 May 2027 (Spring Bank Holiday)
- 30 August 2027 (Summer Bank Holiday)

Non-Pupil Days



Five days selected from within the term dates to be determined by the Board of Directors

Occasional Holidays



Two days selected from within the term dates to be determined by the Board of Directors



We would love you to come and celebrate the launch of St Thomas of Canterbury CE Primary School, Lapford Friday 9th January 2026

9.45am- Church service in St Thomas of Canterbury Church, Lapford

10.30am- Procession from church to the school with the children

Followed by cutting of ribbon/blessing of school/hot chocolate 11.30am Finish



CURIOSITY LOVE BRAVERY COMMUNITY RESILIENCE



AUTUMN MENU · WEEK ONE

| | MONDAY | TUESDAY | WEDNESDAY | THURSDAY | FRIDAY |
|------------------|--|---|---|---|--|
| Main ONE | Breakfast Brunch with Bacon, Sausages, Hash Browns and Beans | Spaghetti Bolognese with Garlic Bread & Salad | Roast Gammon, Roast Potatoes, Gravy, Parsnips, Carrots and Cabbage | Chicken, Ham & Sweetcorn Pie with New Potatoes, Salad & Coleslaw or Garden Peas | Jumbo Fish finger Sandwich with Lettuce, tartare sauce, New Potatoes and Garden Peas |
| Main TWO | Vegetarian Breakfast Brunch with Quorn Sausage, Tomatoes & Beans | Vegetable Soft Shell Taco with Salad & New Potatoes | Chickpea and Sweet Potato Bake with Roast Potatoes, Parsnips, Carrots and Cabbage | Cheese and Onion Quiche with New Potatoes, Salad & Coleslaw or Garden Peas | Veggie Finger Sandwich with New Potatoes and Garden Peas |
| Pasta BAR | Pasta Bar & Jacket Potatoes | Themed Menu Day | Pasta Bar & Jacket Potatoes | Themed Menu Day | Pasta Bar & Jacket Potatoes |

- HOMEBAKES, FRUITPOTS, DESSERTS & PASTA POTS Available daily
- FRESHLY PREPARED SANDWICHES & BAGUETTES Available daily
- BAKED JACKET POTATOES WITH A SELECTION of fillings
- Homemade SOUP OF THE DAY WITH BREAD

We are pleased to offer a variety of allergen free options on our food menu. Although all food is prepared in a kitchen that handles most allergens and therefore we cannot guarantee that cross contamination will never occur, we do take every possible precaution to prevent this from happening.



AUTUMN MENU · WEEK TWO

Main ONE

Beef Chilli Con Carne with Rice, Nachos, Cheese, Guacamole & Sour Cream

Main TWO

Vegetarian 5 Bean Chilli with Nachos, Cheese, Guacamole & Sour Cream

Pasta BAR

Pasta Bar & Jacket Potatoes

TUESDAY

Steak & Vegetable Pie with Mashed Potato, Garden Peas & Carrots

Falafel Wraps with Mashed Potato, Carrots & Peas

Themed Menu Day

WEDNESDAY

Roast Pork with Roast Potatoes, Gravy, Stuffing, Parsnips, Carrots and Cabbage

Homity Pie with Roast Potatoes, Parsnips, Carrots and Cabbage

Pasta Bar & Jacket Potatoes

THURSDAY

Chicken Burger with Wedges & Peas or Salad & Coleslaw

Plant Based Burger with Wedges & peas or Salad & Coleslaw

Themed Menu Day

FRIDAY

Breaded Fish with Roasted New Potatoes & Peas or Beans

Vegetable Fajita with Roasted New Potatoes & Peas or Beans

Pasta Bar & Jacket Potatoes

HOMEBAKES, FRUITPOTS, DESSERTS & PASTA POTS Available daily

FRESHLY PREPARED SANDWICHES & BAGUETTES Available daily

BAKED JACKET POTATOES WITH A SPECIFICATION of fillings

Homemade SOUP OF THE DAY WITH BREAD

We are pleased to offer a variety of allergen free options on our food menu. Although all food is prepared in a kitchen that handles most allergens and therefore we cannot guarantee that cross contamination will never occur, we do take every possible precaution to prevent this from happening.



AUTUMN MENU · WEEK THREE

Main ONE

CURRY DAY
Chicken Biryani with Rice & Naan

Main TWO

Cauliflower, Chickpea & Butternut Squash Korma with Rice & Naan

Pasta BAR

Pasta Bar & Jacket Potatoes

TUESDAY

Sweet and Sour Chicken with Rice, Sweetcorn & a Pineapple Chilli Salsa

Singapore Noodles

Themed Menu Day

WEDNESDAY

Roast Chicken with Roast Potatoes, Gravy, Parsnips, Carrots and Cabbage

Broccoli & Cheddar Quiche with Roast Potatoes, Parsnips, Carrots and Cabbage

Pasta Bar & Jacket Potatoes

THURSDAY

Chipolata Sausage & Mash with Gravy, Carrots & Peas

Vegetarian Sausage & Mash with Gravy, Carrots & Peas

Themed Menu Day

FRIDAY

Salmon Bites or Fish Fingers served with Diced Potatoes and Beans

Halloumi Stuffed Pepper with Diced Potatoes and Baked Beans

Pasta Bar & Jacket Potatoes

HOMEBAKES, FRUITPOTS, DESSERTS & PASTA POTS Available daily

FRESHLY PREPARED SANDWICHES & BAGUETTES Available daily

BAKED JACKET POTATOES WITH A SPECIFICATION of fillings

Homemade SOUP OF THE DAY WITH BREAD

We are pleased to offer a variety of allergen free options on our food menu. Although all food is prepared in a kitchen that handles most allergens and therefore we cannot guarantee that cross contamination will never occur, we do take every possible precaution to prevent this from happening.



Chulmleigh College

PRICE LIST

| | | | |
|--|-------|------------------------|-------|
| TOAST (Morning Break) | £0.41 | CEREAL (Morning Break) | £0.41 |
| MAIN MEAL | £2.20 | PIZZA SLICE | £1.50 |
| MEAL DEAL (MAIN MEAL & HOMEBAKE OR PASTA & HOMEBAKE) | £2.61 | SOUP & ROLL | £1.15 |
| SALAD BOX | £2.15 | SNACK ITEMS | £0.75 |
| PASTA BAR | £2.00 | ROLL & BUTTER | £0.60 |
| GRAB & GO | £1.95 | PASTY | £2.00 |
| JACKET POTATO (1 FILLING) | £1.65 | ETON MESS | £1.25 |
| JACKET POTATO (2 FILLINGS) | £2.15 | CHEESECAKE | £1.25 |
| BAGUETTES | £1.95 | FRUIT POT | £1.25 |
| PANINIS | £1.95 | YOGHURT POT | £0.95 |
| 1/2 PANINI | £1.00 | JELLY POT | £0.95 |
| SANDWICHES | £1.90 | MUFFIN | £1.20 |
| WRAPS | £1.90 | HOMEBAKE | £0.90 |
| | | TAKEAWAY BOX | £0.15 |

